



HEADQUARTERS FIGHTER WEAPONS SCHOOL  
NELLIS AIR FORCE BASE  
LAS VEGAS, NEVADA

Classification **UNCLASS**  
Author: FWS/CC  
Date... *19 July 1957*

**MISSION 03 ORDERS**

**1. OVERVIEW.**

**1.1. Mission overview:**

In today's sortie you will conduct FvF from a neutral position using a Line Abreast setup.

After reaching the Designated Training Area over NAV POINT DOG-BONE LAKE, the IP will take position on your side at 9,000 feet. When you're ready the IP will call the fight. Only at that moment you'll be clear to turn right for a head-on confrontation.

**1.2. Objectives:**

- 1.2.1. Obtain a valid kill;
- 1.2.2. Stay offensive.

**1.3. Mission Commander:**

Capt. John R. Boyd.

**2. AREA OF OPERATIONS.**

**2.1. Working areas:**

Sally Corridor, Range 62.



**2.2. Restricted areas:**

R-4808A, R-4809A.

**2.3. Environmental conditions:**

Standard.

**3. STATUS OF ENEMY FORCES.**

**3.1. Ground forces and AAA:**

NIL.

**4. MISSION EMPLOYMENT BRIEFING.**

**4.1. Flight:**

4.1.1. Pontiac 01 (2x F-86F)

4.1.1.1. Pontiac 1-1: Capt. John R. Boyd;

4.1.1.2. Pontiac 1-2: LT William H. Spencer.

**4.2. Fuel:**

4.2.1. Internal tanks: 2,826 lbs;

4.2.2. External tanks: NIL;

4.2.3. BINGO fuel: 800 lbs.

**4.3. Ground operations:**

Use standard procedures.

**4.4. Departure:**

GASS PEAK departure.



4.5. Enroute:

4.5.1. Mission freq.: Channel 1 (main),  
Channel 11 (alternate);

4.5.2. Formation: Echelon.

4.6. Engagement tactics:

4.6.1. Sequence of events:

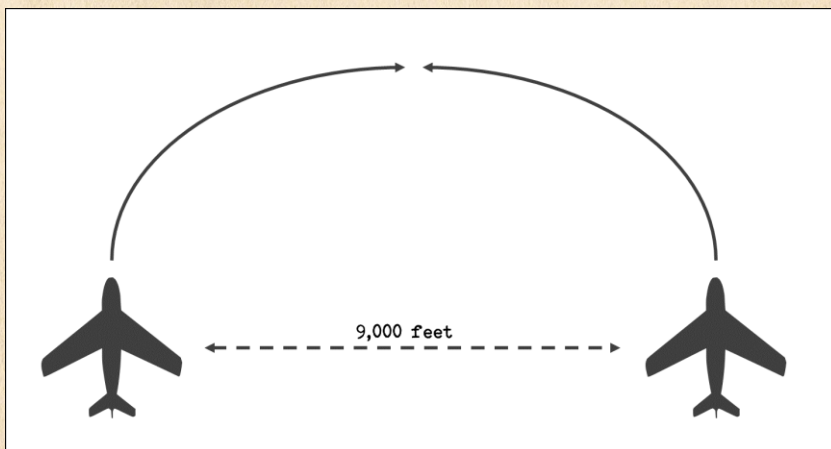
4.6.1.1. Fence in;

4.6.1.2. First 9,000 feet neutral perch;

4.6.1.3. Second 9,000 feet neutral perch;

4.6.1.4. Third 9,000 feet neutral perch;

4.6.1.5. Fence out.



*Line Abreast Setup*

4.6.2. Parameters:

4.6.2.1. Power: full throttle for both  
players;

4.6.2.2. Starting altitude: 18,000 feet;

4.6.2.3. Starting aspect: 0 degrees;



4.6.2.4. Valid kill: one gun track (guns are loaded with blanks).

4.6.3. Knock-it-offs:

4.6.3.1. ROE;

4.6.3.2. Valid kill;

4.6.3.3. 5 minutes after the beginning of each iteration.

4.7. Egress plan (route, mutual support agreements):

NIL.

4.8. Recovery:

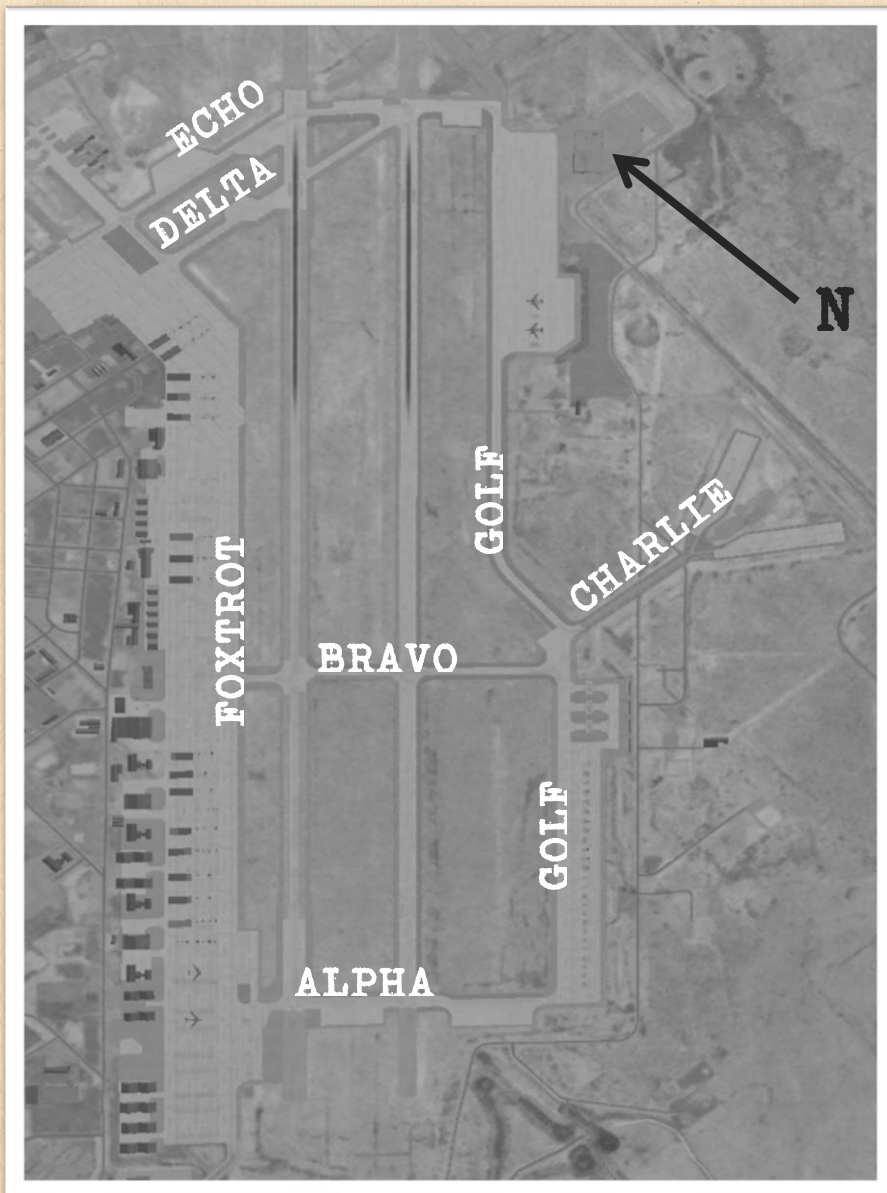
DRY LAKE recovery.



## LIST OF ANNEXES

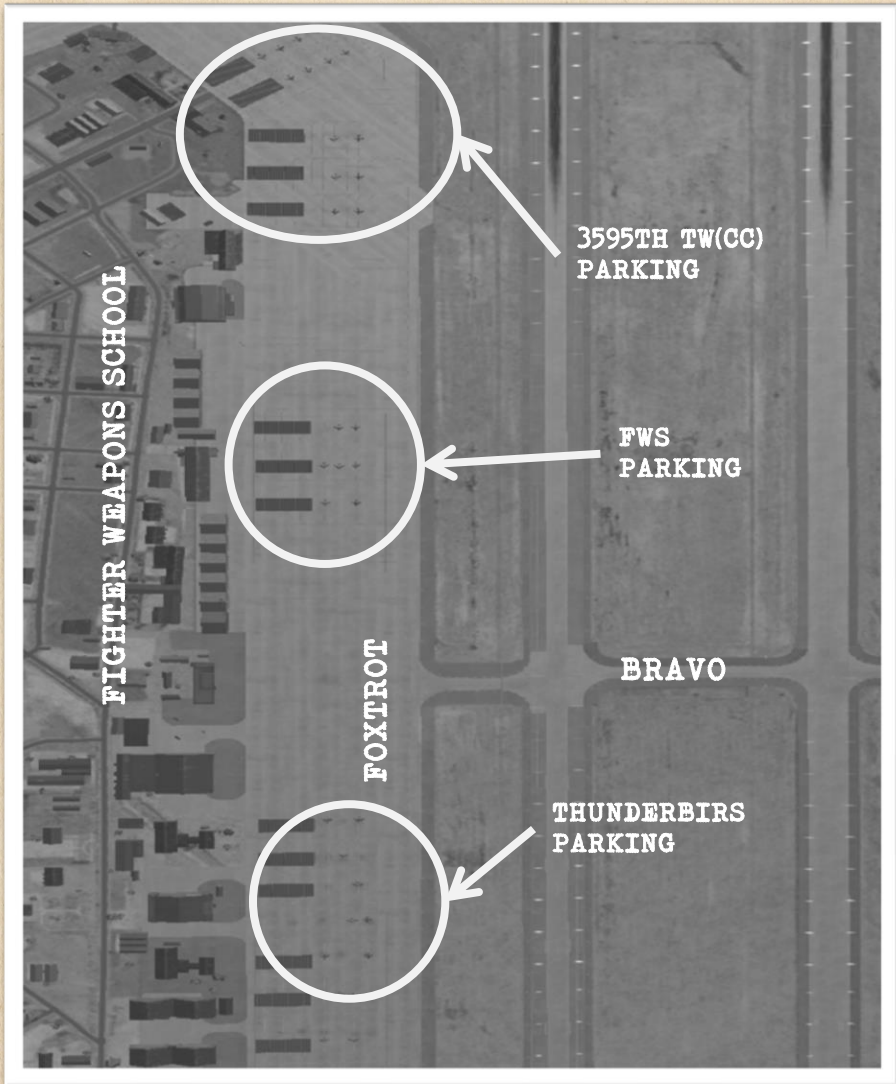
ANNEX "A"	NAVIGATION
ANNEX "B"	COMMUNICATIONS

NELLIS AIR FORCE BASE



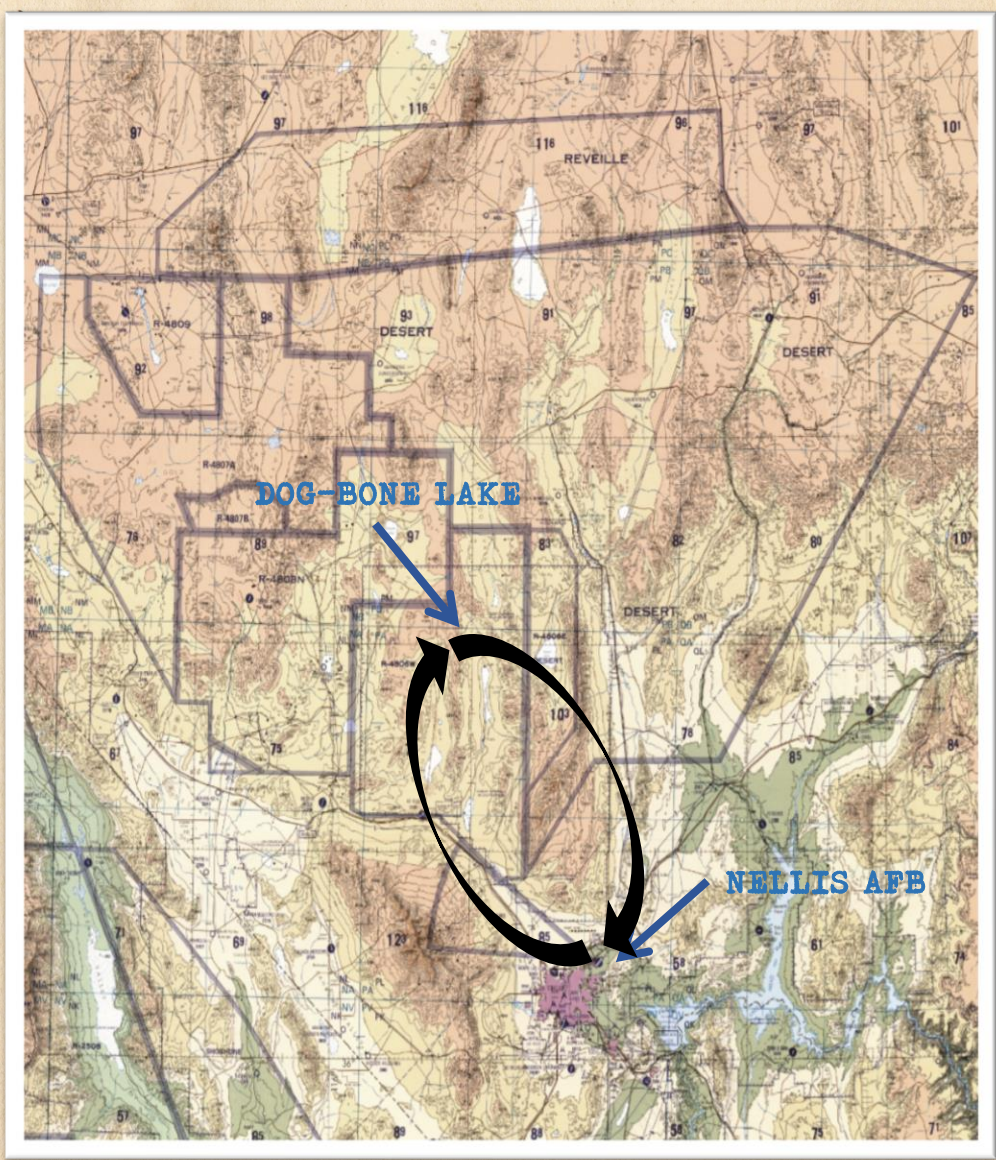


FIGHTER WEAPONS SCHOOL PARKING



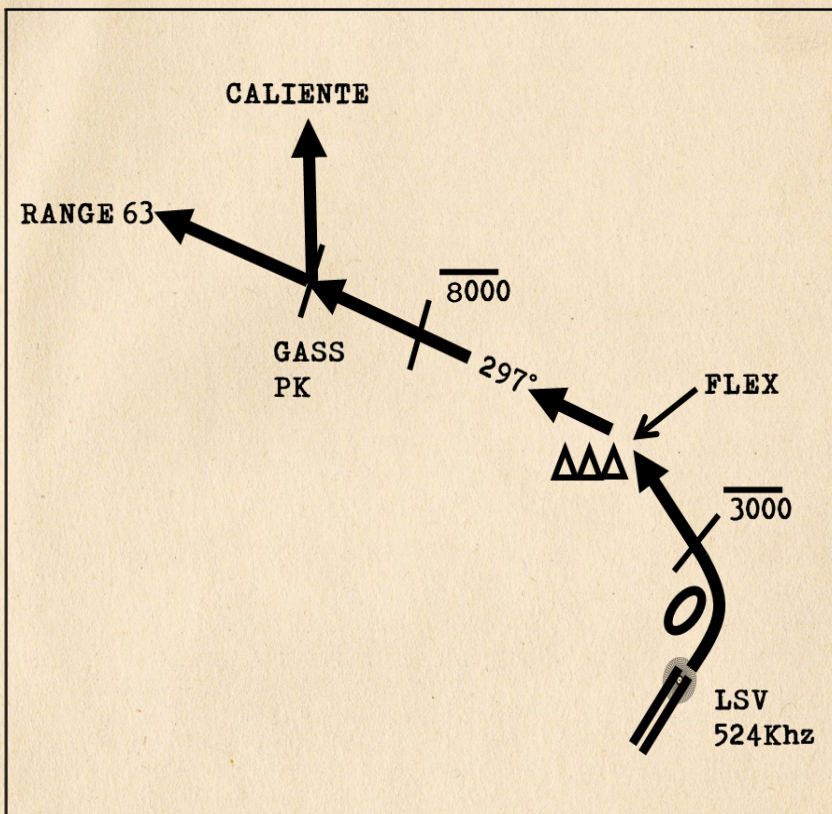


FLIGHT PLAN





## GASS PEAK DEPARTURE



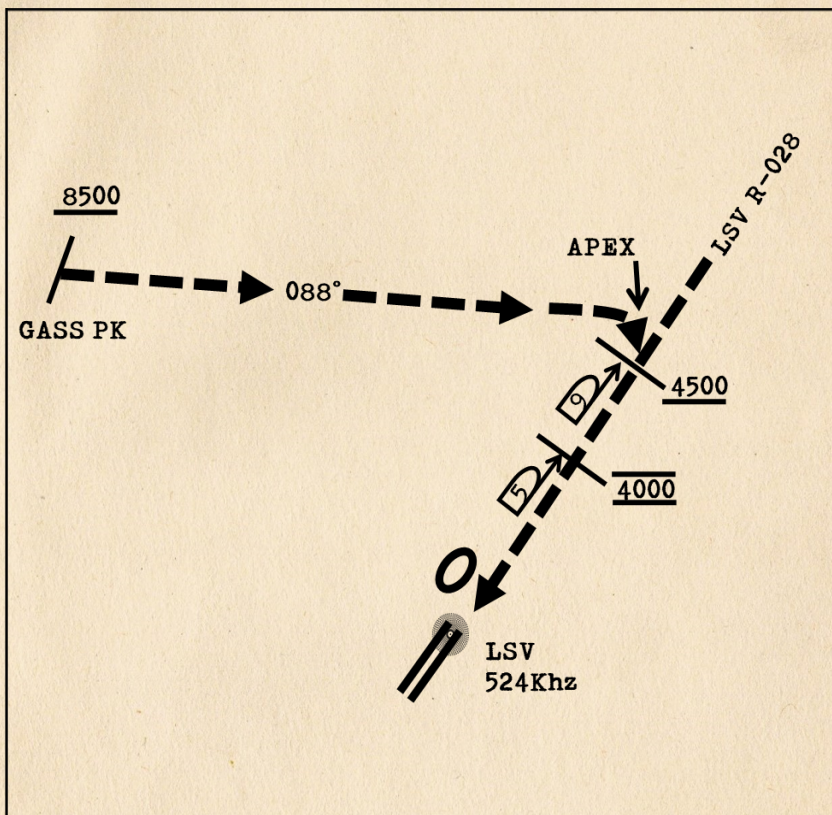
**PILOT IS RESPONSIBLE FOR TERRAIN/OBSTACLE AVOIDANCE**

### TAKE-OFF RUNWAY 3L/R:

1. Remain below 3,000 feet MSL until north of Race Track and turned westbound.
2. Turn left within 4 NM of Nellis direct FLEX.
3. Fly north of FLEX and then turn 297° at or below 8,000 feet MSL.
4. Cross GASS PEAK and fly routing for appropriate mission transition.



## GASS PEAK RECOVERY



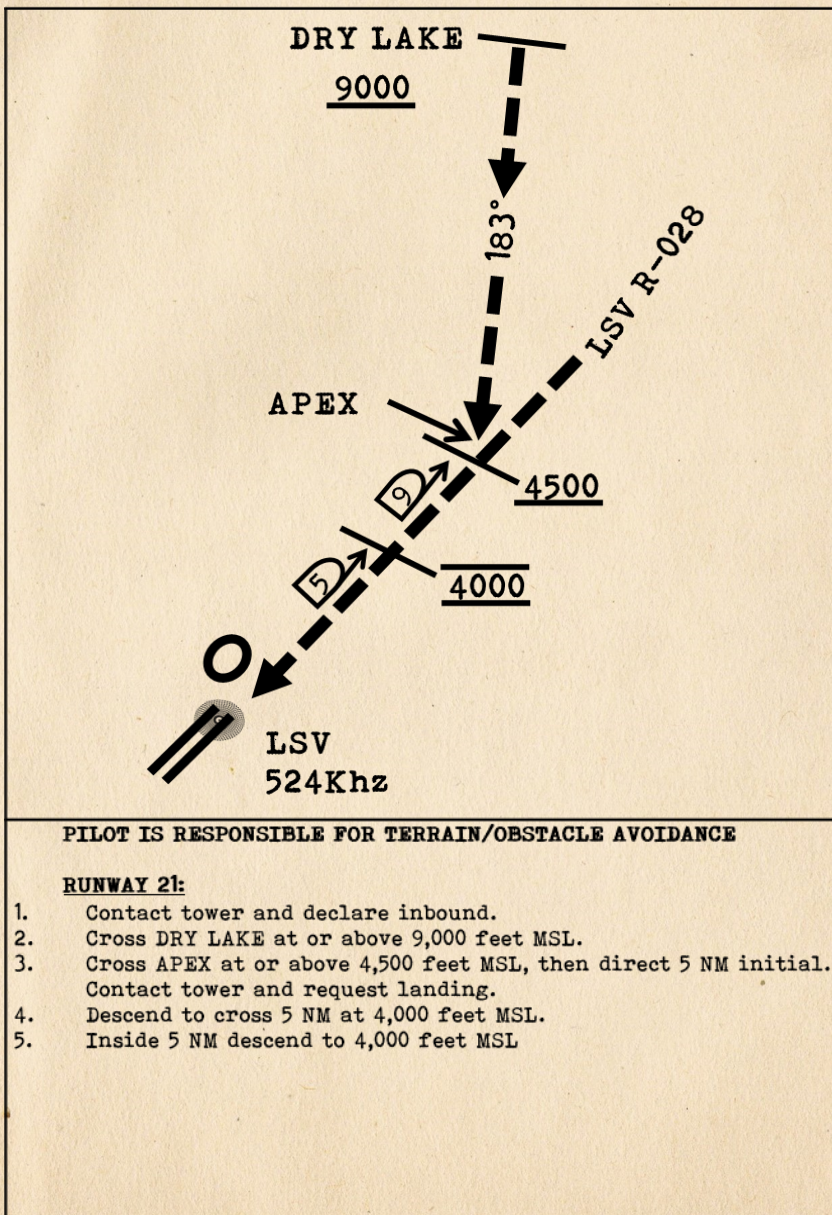
**PILOT IS RESPONSIBLE FOR TERRAIN/OBSTACLE AVOIDANCE**

### RUNWAY 21:

1. Contact tower and declare inbound.
2. Cross GASS PEAK at or above 8,500 feet MSL.
3. Cross APEX at or above 4,500 feet MSL, then direct 5 NM initial. Contact tower and request landing.
4. Descend to cross 5 NM at 4,000 feet MSL.
5. Inside 5 NM descend to 4,000 feet MSL



## DRY LAKE RECOVERY





## CHANNELIZATION

RADIO			NAVIGATION		
CH	NAME	FREQ.	NDB	FREQ.	MORSE
G	GUARD	243.000 Mhz	///	///	///
1	SQUADRON MAIN	260.100 Mhz	///	///	///
2	Nellis AFB	327.000 Mhz	LSV	524 Khz	.-. / ... / ...-
3	Creech AFB	360.600 Mhz	INS	387 Khz	.. / -. / ...
4	Tonopah Test Range Airfield	257.950 Mhz	TQQ	478 Khz	- / --.- / --.-
5	Groom Lake	250.050 Mhz	GRL	618 Khz	--. / .-. / .-..
6	McCarran International Airport	257.800 Mhz	LAS	316 Khz	.-. / .- / ...
7	North Las Vegas	360.750 Mhz	///	///	///
8	SQUADRON AUX	328.500 Mhz	///	///	///
9	BARON	270.025 Mhz	///	///	///
10	BLACKJACK	377.800 Mhz	///	///	///
11	///	///	///	///	///
12	///	///	///	///	///
13	///	///	///	///	///
14	///	///	///	///	///
15	///	///	///	///	///
16	///	///	///	///	///
17	///	///	///	///	///
18	///	///	///	///	///

## NAVAIDS

NAME	LOCATION	FREQ.	MORSE
MCY	Mercury	326 Khz	-- / -. / --.-
LSV	Nellis AFB	524 Khz	.-. / ... / ...-
BLD	Boulder	416 Khz	-... / .-. / --.
LAS	McCarran International	316 Khz	.-. / .- / ...
MMM	Mormon Mesa	446 Khz	-- / -- / --
BTY	Beatty	714 Khz	-... / - / --.-
GRL	Groom Lake AFB	618 Khz	--. / .-. / .-..
TQQ	Tonopah Test Range Airfield	478 Khz	- / --.- / --.-
ILC	Mount Wilson	365 Khz	.. / .-. / .-..
CYS	Crystal Springs	577 Khz	-. / -. / ...
TBL	T-Bird Lake	642 Khz	- / -... / .-..
INS	Creech AFB	387 Khz	.. / -. / ...